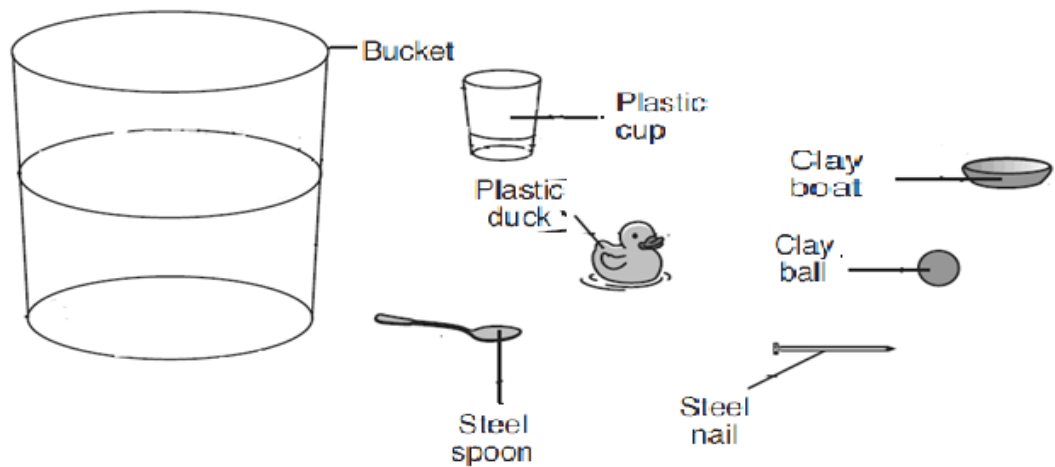


الصف الرابع - العلوم

✚ A group of students completed a float or sink experiment.

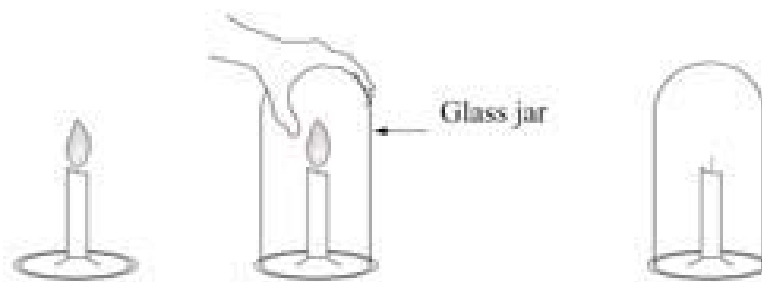
They put six objects into a bucket of water. The objects were made of three different materials: clay, plastic, and steel.

The diagram below shows the results of the experiment.



✚ Complete the following table:

Substances which Sink	Substances which float
- Clay ball..	- Clay boat
-	-
-	-



- ✚ When a glass jar is placed over a lighted candle, the flame goes out.

Why does this happen?

- a- The fire cannot breathe.
- b- The glass makes it cold.
- c- The oxygen will be consumed up.
- d- The candle gets too hot.

- ✚ Choose the best answer for each of the following questions:

- A . Which of the following is an example of the alkaline solution?
- a. Purified water.
 - b. vinegar.
 - c. Orange juice.
 - d. Detergents.

B. Which of these is an element?

- a. Air
- b. Water
- c. Oxygen
- d. Sand

C. Which of the following changes occur due to the moon attraction of the earth:

- a. Lunar and solar eclipse
- b. Day and night
- c. High and low tide
- d. Winter and summer

D. Which is NOT used as an energy source?

- a- Flowing water
- b- iron ore
- c- Sun
- d- Oil.



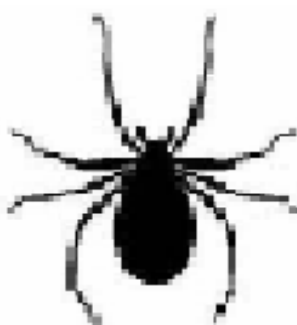
A. Which of the following organisms are insects:



1



2



3



4

- Number 2 and 3
- Number 1 and 4
- Number 4 and 2
- Number 1 and 3

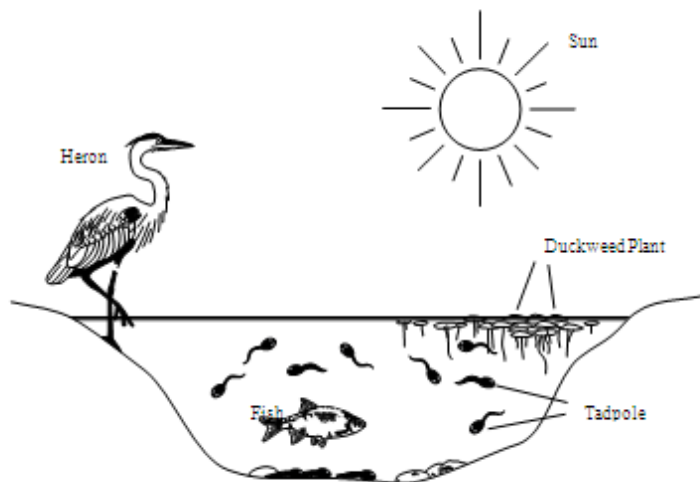
B. How can you know insects from others in the figure?

.....
.....

✚ Write down two different things that people can do to keep the environment less polluted as possible.

1-

2-



✚ The picture above shows a pond and some of the organisms that live in and around the pond. They all depend on each other for food. The tadpole most likely gets its food from which of the following?

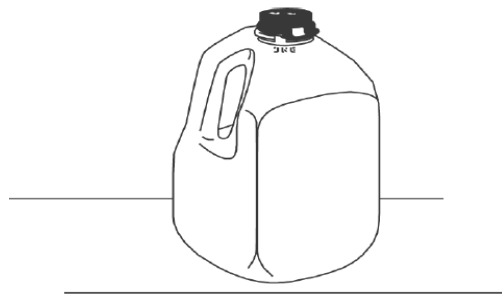
1. sun
2. fish
3. duckweed plant
4. heron

✚ The clay boat and clay ball have the same mass. Which property causes the boat to float and the ball to sink?

- A- color
- B- mass
- C- shape
- D- texture


✚ A plastic container of water is placed in full sunlight. What color should be making the water

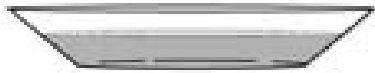
- a. white
- b. yellow
- c. red
- d. black



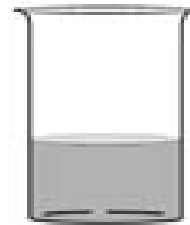
explain your answer ?

.....
.....
.....
.....

 Salem put 150 ml of water in two containers under the sun for 20 minutes, as shown in the picture.



B



A

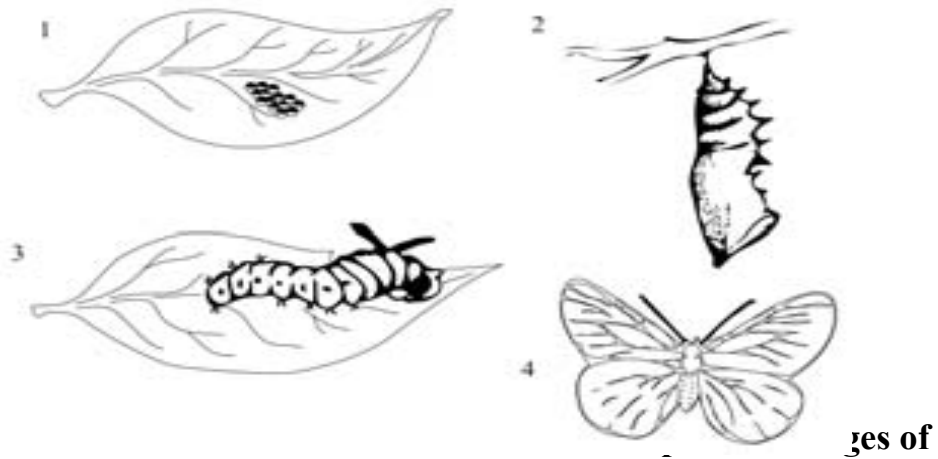
- Which container would probably lose more water due to evaporation?

Explain your answer:

.....
.....
.....
.....

✚ A butterfly laid large number of eggs on a plant leaf.

The picture below shows the developmental stages to produce adult butterfly



butterfly?

- 1 - 2 - 3 - 4
- 3 - 2 - 4 - 1
- 1 - 3 - 2 - 4
- 2 - 3 - 4 - 1

 **The Moon produces no light, and yet it shines at night.**


Why is this?

.....
.....
.....

 **In a box there is a mixture of iron filings and sand.**

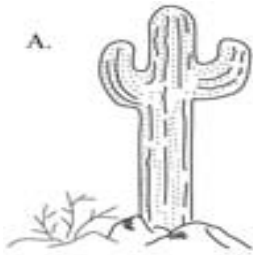
What is the easiest way to separate the iron filings from the sand?

.....
.....

 **Write down one thing your heart does that helps the other parts of your body.**

.....
.....
.....
.....

A. Which picture shows plants commonly found in a desert?



B. What happens to the plants and fish which lives in a river when a factory throw large quantities of hot water in the river?

.....
.....
.....
.....

+ It is possible for material to change its state of matter from one state to another?

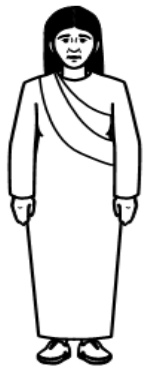
a- How can a solid change into a liquid?

.....
.....

b- How can a gas change into a liquid?

.....
.....

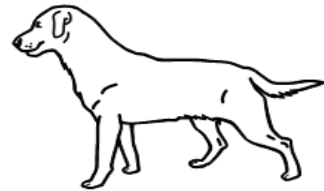
✚ Some of the organisms shown bellow gives birth to young that develop inside the mother; others have young that hatch from eggs laid outside the mother.



human



frog



dog



butterfly



bird



whale

In the table below, write down the names of the organisms that belong to each group.

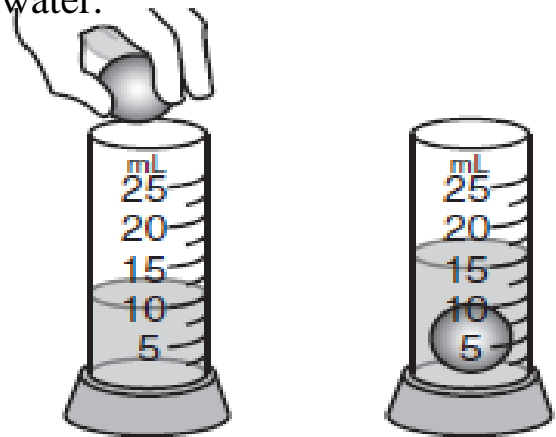
Organisms that lay eggs	Organisms that give birth
- bird	- Human
-	-

-	-
---------	---------

✚ A student added a small ball to a graduated cylinder containing 10 milliliters of water.

What is the volume of the ball?

- A- 5 mL
- B- 10 mL
- C- 15 mL



1. A soccer ball was weighed before and after pumping air into it.

Would the soccer ball weigh more before or after adding air to it?

.....

Explain your answer.

.....
.....
.....
.....

✚ Ahmad teacher put a plate of water on the edge of a sunny window. When Ahmad looked to the plate at the end of the day, he found it empty of water.

Explain why the water disappeared?

.....
.....
.....

2. There is a mixture of water and sand in a pot.

What's the best way to separate water from sand?

.....
.....

✚ The Sun is bigger than the Moon, but they appear to be about the same size when you look at them from the Earth. Why is this?

- The moon is close to the earth.
- The sun shines on the surface of the moon.
- The sun is closer than the moon.
- Because you look at them from the same place on the Earth.

✚ Some materials were buried in a wetland for ten years. And then they were extracted.

Which one of the buried materials doesn't change?

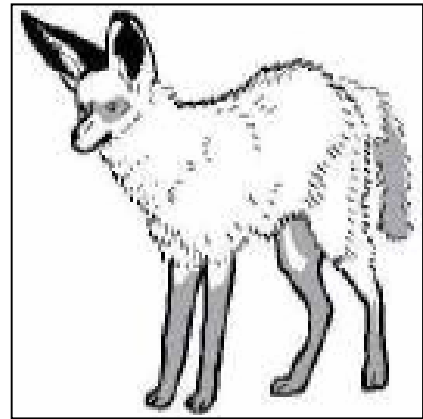
- Plastic bottle.
- Plant leaf.
- Iron nail
- Human bone

- ✚ Animals usually have physical features that help them live in certain places.

Look at the picture shown bellow, this animal lives in a hot desert.

What physical feature does this animal have that helps it lose heat?

- a) a thick coat of fur
- b) a bushy tail
- c) small eyes
- d) large ears



- ✚ Which group of the following organisms contain only living things?
 - o Rabbit, seed, bird
 - o seed, birds, wind
 - o Volcano, a candle and a rabbit
 - o wind, Candle, a volcano